

Tau fakailoaaga, tiviaga he gakau

Gahua fefe e tiviaga he gakau

- 1 Fakaaoga e kato tivi nai ke fuafua-aki e fakavao (se) haau
- 2 Liu-aki mai e fuafuaaga nai ki a mautolu ke he faga-tohi na (nakai fai totogi)
- 3 To, tivi e mautolu e tau fuafuaaga nai mo e to fakailoa atu kia koe.

Manako, lagomatai nakai a koe?

Fakamolemole, hea atu **0800 924 432** nakai fai totogi. Talamai ki a mautolu e vagahau kua manako a koe ke fakaaoga to, maeke ia mautolu ke taute taha tagata ke tutala ki a koe hagaa ke he fuafuaaga he gakau haau.

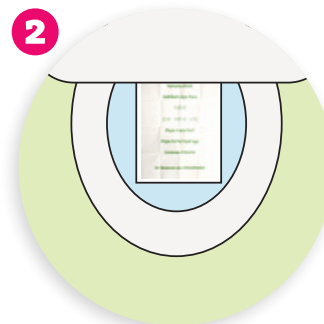
Fakaaoga fefe e kato tivi?



MAHUIGA LAHI

Fofole kehe, taha barcode mai he **lau-pepa fakamooli** ti pili ke he faahi he tama lupu (tube).

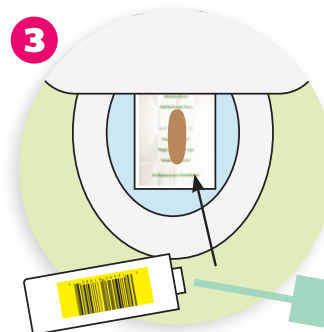
Fakamau hifo e aho ne taute ai e tivi haau ke he lau-pepa fakamooli. Fakapuke e vala ne toe he lau-pepa.



Fakapala (mimi) ti fakatafe e falevao kaeke kua maeke.

Tuku falu lau pepa-fale-tote (falevao) ke he pu fale-vao.

Fofola e **lau-pepa tivii** luga he tau lau-pepa falevao.

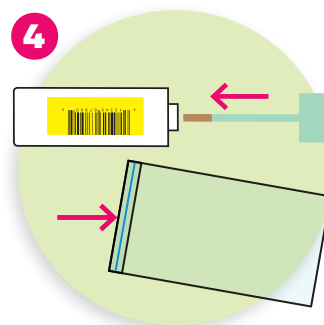


Tuku e vala fakavao (se) i luga he lau-pepa fuafua (sample sheet).

Tamau, fakamafiti e ponoti he lupu (tube) to tomo hifo e fakavao (se) haau.

Tuku e mata-hiku he kakau lanu laukou ke he fakavao (se) haau ke galo mo e lauia katoa e tama kakau tote ia.

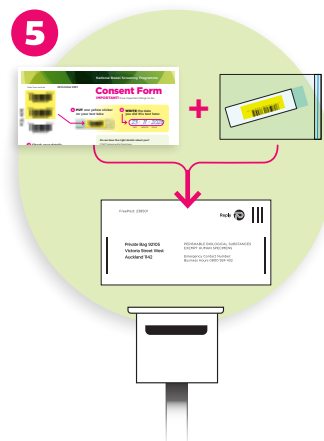
Ko e tama vala tote noa ni he sample ia kua manako ki ai.



Liu, tuku e tama kakau ia ki loto ke he lupu (tube) Peehi hifo e ponoti ke **kiliki (click)** ke tamau. Haha iai e puke vai ke he lupu (tube) ke lata mo e fuafuaaga haau.

Fakatafe e falevao ti holoholo e tau liima. Fakatafe foki e lau-pepa fuafua haau.

Tuku e lupu ki loto he **taga kua sipi (zip)**. Fofota e taga sipi (zip) ke tamau.



Tuku e taga **mo e tama lupu** mo e **lau-pepa fakamooli** ki loto ke he faga-tohi.

Faka-hu e fuafuaaga haau ke he aho ia ni po ke aho hake ka to-tua kua, nakai tuai mitaki e fuafuaaga haau.